

Jason North  
(610) 451-1178  
[jnorth@chesequip.com](mailto:jnorth@chesequip.com)

Nathan Leyburn  
(443) 993-3007  
[nleyburn@chesequip.com](mailto:nleyburn@chesequip.com)



**CHESAPEAKE**  
ENVIRONMENTAL EQUIPMENT

*Proudly Serving MD, DC & DE*

## REPRESENTING THE FINEST MANUFACTURERS WITH HONESTY & INTEGRITY



### **ABS-SULZER PUMPS & MIXERS**

**Pumps:** Drypit, Submersible, Grinder, Solids-Handling, Axial Flow and S.S. Pumps. Utilizing the proven Contra-Block Technology for clogging situations.  
**Mixers:** Submersible Mixers including Flow Booster, Low-Speed, Compact & Self-Aspirating Aerators.



### **ABS-SULZER HST TURBO BLOWERS**

HST Turbo Compressors incorporates proven magnetic bearing technology that provides very High Efficiency, Reliability, Durability, Low Noise & Low Lifecycle Costs.



### **SULZER PUMPS**

Vertical Turbine, ANSI & Split-Case Pumps. Sulzer Pumps provide high efficiency, durability, capacities and high reliability with a wide range of applications.



### **AIRVAC**

Specializing in vacuum wastewater conveyance systems. Airvac vacuum sewers are a cost-effective, environmentally friendly alternative to traditional gravity and pressure sewer systems that are low maintenance, efficient and reliable.



### **AQUALITEC**

Pump Station Bar Screens w/ vertical orientation capability, Multiple Rake, Washer Compactors, Grit Classifiers, Drum Screen, Spiral & Trash Screens. Sludge and Leachate Treatment Equipment



### **ATARA EQUIPMENT LTD.**

Conveyor equipment: Shaftless, Live Bottom, Vertical, Screw, Screw Compactors, Drainage & Silo. Additional equipment offerings: Screening Press, Screw Feeders, Slide Gates, Vertical Grit Classifier, Grit Chamber & Washer Compactor.



### **BIOWORKS / AWT**

Specializing in treatment systems utilizing biological processes to remove pollutants resulting in high quality treated effluent. Technologies include: Continuous Fill Batch Reactor Plants, Advanced SBR Systems, Suspended Fine Bubble Aeration & Control Systems.



### **BIOREM**

Specializing in complete Odor, VOCs & hazardous air removal systems. Bio-Sorben® media (10 yr warranty), Skid Mounted Systems, Moisture Removal, Bio Trickling Filters and Bio-Gas Conditioning Systems available.



### **CONTINENTAL CARBON GROUP**

Specializing in Carbon Based Odor Control, Air and Water Filtration Systems. Reliable and effective way of treating odorous compounds. Exclusive manufacturer of Calgon Carbon odor control systems in the U.S.



### **WATER FILTRATION SYSTEMS**

Continental Carbon Group designs and manufactures carbon filtration systems specifically for the water industry. Complete systems include the design, vessels and carbon media.



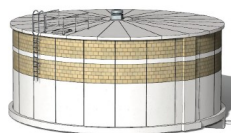
### **DUTCHLAND, INC.**

Specializes in the design, engineering, manufacturing, construction of high quality precast post-tensioned concrete water, wastewater structures and turn-key treatment plants. A standard two year warranty is provided.



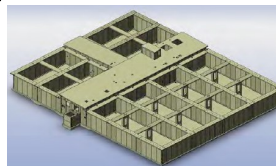
### **CALGON UV**

Over 25 years of UV Disinfection experience. Sentinel® In-Line Systems treats water from 0 to 40 MGD range flows. Open Channel Systems utilizes efficient low pressure, high output lamps that requires less lamps per system.



### **CIRCULAR PRECAST TANKS**

Dutchland's pre-cast, post tensioned circular & elliptical concrete tanks can be utilized for several applications, including; water storage, clarifiers, CSO, digester, equalization, reactors, effluent, etc.



### **RECTANGULAR PRECAST TANKS**

Dutchland's pre-cast, post tensioned rectangular concrete tanks can be utilized for oxidation ditches, extended aeration, SBR systems, reactors, etc. Tanks can be differentially buried & include walkways.



### **ENVIRODYNE - WASTEWATER EQUIP.**

Specializing in Clarifiers, Hercules™ Drive Units, Gravity Thickeners, Flocculators, Brush/Disc Rotor Oxidation Ditches, Algae Cleaning System, Grit System, SBR & DAF's.



### **ENVIRODYNE - DIGESTION EQUIP.**

Specializing in Rotary Drum Thickeners, Belt Filter Presses, Anaerobic & Aerobic Digesters, Draft Tube Mixers, Vertical Motion Mixer, Gas Mixing System and Sludge Bagging Systems.

Please check <http://www.chesapeakeequipment.com/> for additional locations & manufacturers

\*\*Please note, not all equipment lines are represented in all locations\*\*

## **DIFFUSED GAS TECHNOLOGIES, INC.**

Manufacturer of diffuser systems for water & wastewater treatment. Capabilities include coarse to extremely fine bubbles diffusers with flow ranges from .5 to 50 CFM. Ceramic Dome, Ceramic Tubular, Silicon Sleeve and Stainless Steel options available.



### **GLASCO UV**

Glasco UV has manufactured UV systems for Industrial, residential, commercial and municipal applications for over 50 years in NJ. Products include Horizontal, Vertical, Flow Through, Chambered, Explosion Proof, PVC, Specialty and Retro Fits.

## **EnBiorganic Technologies**

### **ENBIOORGANIC**

Innovative microbiological treatment system for wastewater treatment municipalities. Individual biological dosing systems placed strategically along the collection system to increase bacterial growth improving plant efficiency.



### **IEC, INC.**

Specializing in cover and liner systems including: Clarifier Launder Covers, Gas Storage Systems, Clarifier Covers, Odor Control Covers, Tank Cover. Lagoon and Pond Liners.



### **FIBER TECHNOLOGY CORP.**

FTC's FRP panel water tank systems can be utilized for fire suppression, water & rain water storage. Tanks are assembled with gasket and bolt kits that make shipping cost affective & installation in restrictive locations possible.



### **FORSTA FILTERS**

Forsta offers self cleaning water filters that are low maintenance, highly efficient and dependable. Utilized in the water industry, including wastewater markets during the secondary & tertiary phase.



### **GLASS · STEEL, INC.**

Offering FRP products including: Clarifier troughs, baffle walls, weir plates, walkable launder covers, stop logs, stamford & scum baffles, ladders, parshall flumes, walkway and handrail systems.



### **LIGHTHOUSE FILTERS**

Specializing in water filtration systems for primary, secondary and tertiary systems. Product offerings include Plate Clarifiers and Volcano Sand Filters.



### **MASS TRANSFER SYSTEMS**

Jet Aeration, Jet Mixing, Self-Aspirating Submersible Aerator, Floating Effluent Decanters, Radial Pod Aerators, Liquid Recirculation Pumps, Air Blowers.



### **PRO-WATER SYSTEMS**

Specializing in customized wastewater treatment systems. Containerized Models with flow capacities between 3,000 gpd to 100,000 gpd. Field Installed systems up to 0.5 MGD.



### **S&S TECHNICAL**

Manufacturer of high quality, customizable and durable pump skid systems. Includes: Metering skids, Booster skids, Chemical skids, Tepid Water Systems, Loading Systems, Heat Exchanger skids and Control Panels.



### **STANDARD SOLAR**

Standard Solar is a leading solar developer with over 1,500 installations. Full service support includes: design, engineering, installation, financing & operation/maintenance. Ground, Roof or Parking Mount Systems are available.



### **VENT-O-MAT / RF VALVES**

Valves and effective air release vacuum protection & surge alleviation for water & wastewater industries. USA Headquarters locally in Hanover, MD.



### **TANKS - DATA DESIGN SERVICES**

ASSMAN - Polyethylene & Plastic tanks  
Belding Tank Tech. - FRP and Stainless Steel Tanks  
Composites USA - FRP Duct, Tanks, Stacks and FRP Pipe



### **VENT-O-MAT**

Cutting edge air release valves outperforms competitors. Utilizes HDPE floats with no mechanical components. Standard ARV functions include: fill venting, vacuum break, continuous venting, surge alleviation and water hammer protection.

## **WASTEWATER TECHNOLOGIES**

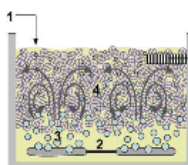
### **WASTEWATER TECHNOLOGIES**

Complete Packaged Water Treatment facilities. Biorotor™ biological treatment system, BioDISC™ tertiary filtration systems, MBR Process Systems and Oil-Water Separators.



### **WSI INTERNATIONAL**

Designs custom waste water treatment package systems with over 30 years of experience. WSI offers multi stage DAF units designed for maximum TSS removal.



### **MBBR / BIO CHIP REACTOR SYSTEMS**

WSI's system is an enhanced activated sludge process with the biomass attached onto small bio-media that is suspended in the mixed liquor. The BCR system combines the advantages of a suspended growth process and an attached growth process.