

Jason North  
(610) 451-1178  
[jnorth@chesequip.com](mailto:jnorth@chesequip.com)

Nathan Leyburn  
(443) 993-3007  
[nleyburn@chesequip.com](mailto:nleyburn@chesequip.com)



**CHESAPEAKE**  
ENVIRONMENTAL EQUIPMENT

*Proudly Serving MD, DC & DE*

Jeffrey Mancini  
(804) 614-8377  
[jmancini@chesequip.com](mailto:jmancini@chesequip.com)

## REPRESENTING THE FINEST MANUFACTURERS WITH HONESTY & INTEGRITY



### ABS-SULZER PUMPS & MIXERS

**Pumps:** Drypit, Submersible, Grinder, Solids-Handling, Axial Flow and S.S. Pumps. Utilizing the proven Contra-Block Technology for clogging situations.  
**Mixers:** Submersible Mixers including Flow Booster, Low-Speed, Compact & Self-Aspirating Aerators.



### ABS-SULZER HST TURBO BLOWERS

HST Turbo Compressors incorporates proven magnetic bearing technology that provides very High Efficiency, Reliability, Durability, Low Noise & Low Lifecycle Costs.



### SULZER PUMPS

Vertical Turbine, ANSI & Split-Case Pumps. Sulzer Pumps provide high efficiency, durability, capacities and high reliability with a wide range of applications.



### BIOWORKS / AWT

Specializing in treatment systems utilizing biological processes to remove pollutants resulting in high quality treated effluent. Technologies include: Continuous Fill Batch Reactor Plants, Advanced SBR Systems, Suspended Fine Bubble Aeration & Control Systems.



### BIOREM

Specializing in complete Odor, VOCs & hazardous air removal systems. Bio-Sorben® media, Basys System, Skid Mounted Systems, Moisture Removal, Bio Trickling Filters & Bio-Gas Conditioning Systems.



### BIOREM - BIOFILTER SYSTEMS

Treatment of air flows from 100-500,000 cfm of air. Available in numerous sizes, shapes and configurations. Integrates permanent Bio-Sorben® media (10 yr warranty) into modular or custom designed systems for any treatment processes.



### CONTINENTAL CARBON GROUP

Specializing in Carbon Based Odor Control, Air and Water Filtration Systems. Reliable and effective way of treating odorous compounds. Exclusive manufacturer of Calgon Carbon odor control systems in the U.S.



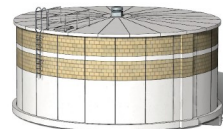
### CALGON UV

Over 25 years of UV Disinfection experience. Sentinel® In-Line Systems treats water from 0 to 40 MGD range flows. Open Channel Systems utilizes efficient low pressure, high output lamps that requires less lamps per system.



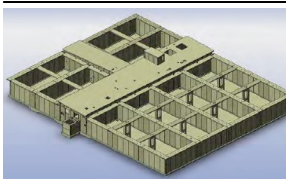
### DUTCHLAND, INC.

Specializes in the design, engineering, manufacturing, construction of high quality precast post-tensioned concrete water, wastewater structures and turn-key treatment plants. A standard two year warranty is provided.



### CIRCULAR PRECAST TANKS

Dutchland's pre-cast, post tensioned circular & elliptical concrete tanks can be utilized for several applications, including; water storage, clarifiers, CSO, digester, equalization, reactors, effluent, etc.



### RECTANGULAR PRECAST TANKS

Dutchland's pre-cast, post tensioned rectangular concrete tanks can be utilized for oxidation ditches, extended aeration, SBR systems, reactors, etc. Tanks can be differentially buried & include walkways.



*Washington DC Only*

### DUPERON

Duperon is a leader in adaptive screening technologies & provides solutions for coarse/fine screening, low flow screening, ultra screening, washing compacting and conveying. Solutions include their proven FlexLink™ design.



### ENVIRODYNE SYSTEMS INC

Founded in 1971, Envirodyne designs & manufacturers a full range of high quality water and wastewater equipment. Locally engineered in Camp Hill, PA.



### ENVIRODYNE - DIGESTION EQUIP.

Specializing in Rotary Drum Thickeners, Belt Filter Presses, Anaerobic & Aerobic Digesters, Draft Tube Mixers, Vertical Motion Mixer, Gas Mixing System and Sludge Bagging Systems.



### ENVIRODYNE - WASTEWATER EQUIP.

Specializing in Clarifiers, Hercules™ Drive Units, Gravity Thickeners, Flocculators, Brush/Disc Rotor Oxidation Ditches, Algae Cleaning System, Grit System, SBR & DAF's.



### ECOMEMBRANE

**Membrane Gasholders:** Agricultural, Food Processing & Industrial applications only.  
**Pre/Post Digestion Tank & Clarifier Covers:** Agricultural, Food Processing, Industrial and Municipal applications.

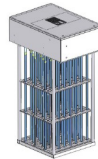
Please check <http://www.chesapeakeequipment.com/> for additional locations & manufacturers

\*\*Please note, not all equipment lines are represented in all locations\*\*



**GLASCO UV**

Glasco UV has manufactured UV systems for industrial, residential, commercial and municipal applications for over 50 years. Products are assembled in their state of the art facility located locally in New Jersey.



**GLASCO UV – HORIZONTAL/VERTICAL SYSTEMS**

Horizontal UV Systems are designed per flow & can be provided with packaged stainless steel channels or be embedded into concrete.

Vertical UV Systems are designed to treat low to large flows and are designed for 30" or 60" water levels.



**FIBER TECHNOLOGY CORP.**

FTC's FRP panel water tank systems can be utilized for fire suppression, water & rain water storage. Tanks are assembled with gasket and bolt kits that make shipping cost affective & installation in restrictive locations possible.



**FORSTA FILTERS**

Forsta offers self cleaning water filters that are low maintenance, highly efficient and dependable. Utilized in the water industry, including wastewater markets during the secondary & tertiary phase.



**LAYNE**

Layne offers various treatment equipment for water and wastewater applications. Including: LayneOx Pressure Filters, Ion Exchange Systems, Arsenic Treatment Media and Air Stripper Systems (Largest Manufacturer in US for removal of radon and VOC's).



**LAYNE - MEMBRANE SYSTEMS**

Layne's membrane systems include: Reverse Osmosis, Ultra-filtration, Nano-Filtration and Micro-Filtration equipment. Layne's MBR Systems utilizes PTFE Hollow-Fiber membranes that are 6 times stronger than PVDF.



**MASS TRANSFER SYSTEMS**

Jet Aeration, Jet Mixing, Self-Aspirating Submersible Aerator, Floating Effluent Decanters, Radial Pod Aerators, Liquid Recirculation Pumps, Air Blowers.



**PCM**

Progressive Cavity Pumps, Chemical Pumps, Dosing Pumps, Chemskids, Peristaltic Pump and Reciprocating Pumps. Applications include: Polymer, Lime Milk, Liquid Sludge, Thickened Sludge & Scum/Foam Pumping.



**STANDARD SOLAR**

Standard Solar is a leading solar developer with over 1,500 installations. Full service support includes: design, engineering, installation, financing & operation/maintenance. Ground, Roof or Parking Mount Systems are available.



**TANKS - DATA DESIGN SERVICES**

ASSMAN - Polyethylene & Plastic tanks  
Belding Tank Tech. - FRP and Stainless Steel Tanks  
Composites USA - FRP Duct, Tanks, Stacks and Pipe



**USEMCO - CONTROLS & SPECIALITY**

Controls: Custom Designed Control Panels, Sentry Speed & Touch Screen Controllers, Turnkey Power Shack Buildings, Floats & Sensors  
Specialty: Access Hatches, Aboveground and Underground, Bulk, Storage & ASME Pressure Vessels.



**USEMCO - SEWAGE PUMP STATIONS**

Custom designed systems, including; Pump Mate (wet well mounted, above ground valve & controls), Flooded Suction, Submersible, Storm Water, Elite Series (low profile w/ generator) & Self Priming Pump Stations.



**USEMCO - WATER BOOSTER STATIONS**

Custom designed systems, including; AquaPak (turnkey w/ controls, building & designs up to 12 mgd), Aquafer (below ground station), Skid Pak, Mini Pak and Circular Valve/Meter Vaults.



**VENT-O-MAT / RF VALVES**

Effective air release vacuum protection & surge alleviation for water & wastewater industries. Cutting edge air release valves outperforms competitors.



**WASTEWATER TECHNOLOGIES**

Complete Packaged Water Treatment facilities. Biorotor™ biological treatment system, BioDISC™ tertiary filtration systems, MBR Process Systems and Oil-Water Separators.



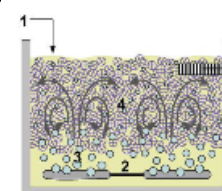
**COLDWELL-WILCOX TECHNOLOGIES**

Coldwell-Wilcox offers a complete line of gate systems, including: Sluice Gates, Slide Gates, Weir Gates, Flap Gates, Flexible Flap Gates, Stop Gates and Stop Logs. In excess of 100 years of experience in water & wastewater industry.



**WSI INTERNATIONAL**

Designs custom waste water treatment package systems with over 30 years of experience. WSI offers multi stage DAF units designed for maximum TSS removal.



**MBBR / BIO CHIP REACTOR SYSTEMS**

WSI's system is an enhanced activated sludge process with the biomass attached onto small bio-media that is suspended in the mixed liquor. The BCR system combines the advantages of a suspended growth process and an attached growth process.

Please check <http://www.chesapeakeequipment.com/> for additional

\*\*Please note, not all equipment lines are represented in all locations\*\*